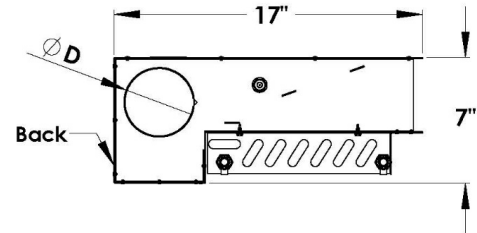
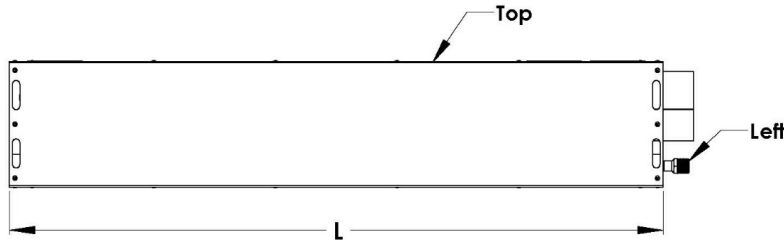


CB-SH-17

Smart Submittal for Soffit Mounted Vertical
Horizontal Discharge Chilled Beam



SH MODEL

- ☐ 17" Tall, 7.0" Wide (17)

COIL CIRCUITS

- ☐ 2 pipe 2 Row (2)
☐ 4 pipe 2 Row (4)

COIL CAPACITY

- ☐ Single circuit coil for 0.5-1.50gpm (S)
☐ Dual circuit coil for 1.50-2.4gpm (D)

COIL CONNECTIONS

- ☐ 5/8" OD (for sweat connection by others) (N)
☐ 1/2" MNPT (for field connection to 1/2" FNPT fittings) (M)*

INDUCTION SELECTION

- 6R 4R 3R 2R
☐ ☐ ☐ ☐

COIL PIPING HANDING (see page 2 for details)

- ☐ Coil Left Hand Side (L) (as shown above)
☐ Coil Right Hand Side (R) (Coil Opposite Side)

INLET LOCATION (see page 2 for details)

- ☐ Left Side (L)
☐ Right Side (R)
☐ Front (F)
☐ Back (B)
☐ Top (T)
☐ Combo Left and Right (C)

UNIT SIZE (see page 2 for details)

- ☐ 2' nom. L = 24" (2FT)
☐ 3' nom. L = 36" (3FT)
☐ 4' nom. L = 48" (4FT)
☐ 5' nom. L = 60" (5FT)
☐ 6' nom. L = 72" (6FT)

INLET SIZE (see page 2 for details)

- ☐ 3" nom. (DØ = 2 5/8" Round)
☐ 4" nom. (DØ = 3 5/8" Round)
☐ 5" nom. (DØ = 4 5/8" Oval)

COLOR SELECTION

- ☐ No Finish (0)

COIL FINISH

- ☐ Self finish (0)
☐ Flat black (F)*

INSULATION

- ☐ No insulation (0)
☐ External insulation (E)*

INLET SHAPE

- ☐ Round (0)
☐ Oval (V)

MOUNTING BRACKETS

- ☐ Fixed (0)

NO CONDENSATE DRAIN

- ☐ No Tray or Drain (0)

Left hand piping shown
Right hand opposite

Tags:	QTY:		SPECIFICATIONS (also see specification sheet)
			-Plenums constructed of 20ga galvanized steel (unfinished) -Balancing /commissioning port next to inlet -Horizontal discharge grille by others -Return plenum/ transition and grille by others
			*Indicates an added cost item -Additional lead time may be required -Contact Carson Solutions for more information

Project:

Submittal Date:

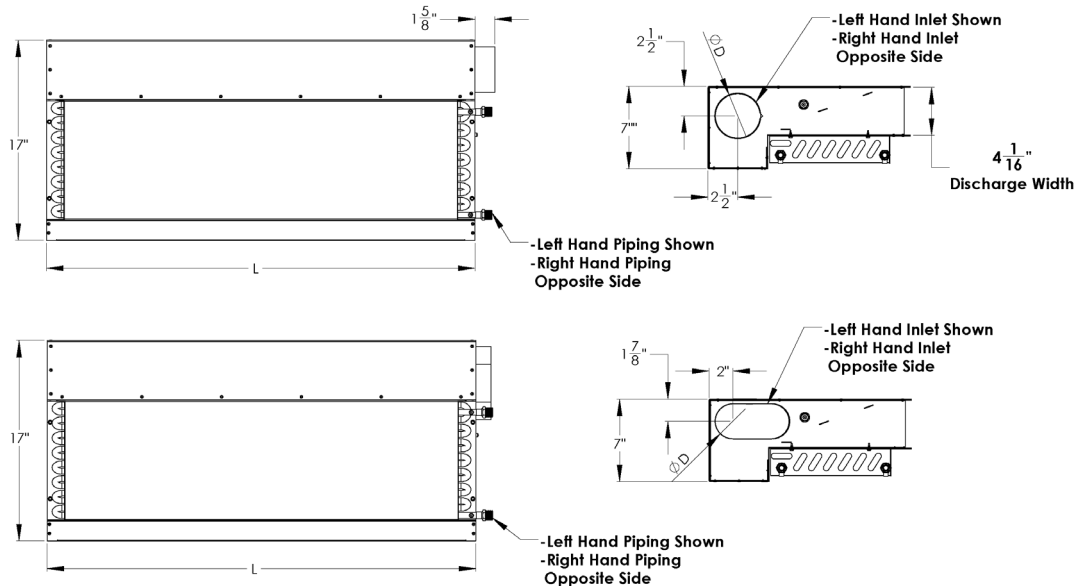
Location:

Product Code

CB-SH-*-*-*-X*-*-*

Page

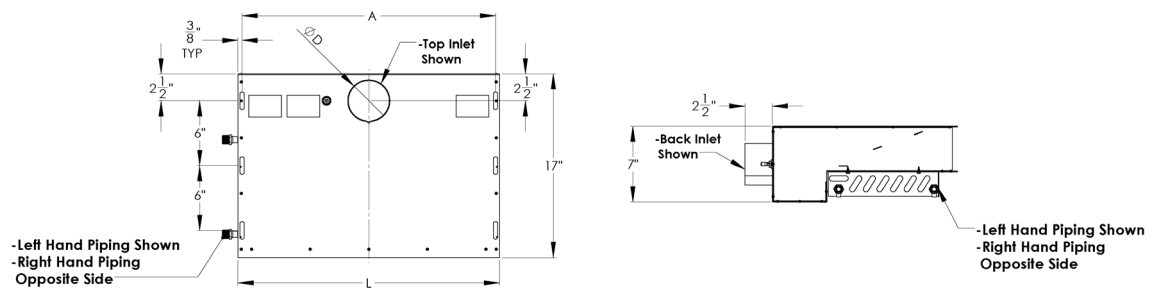
Side Inlet Locations



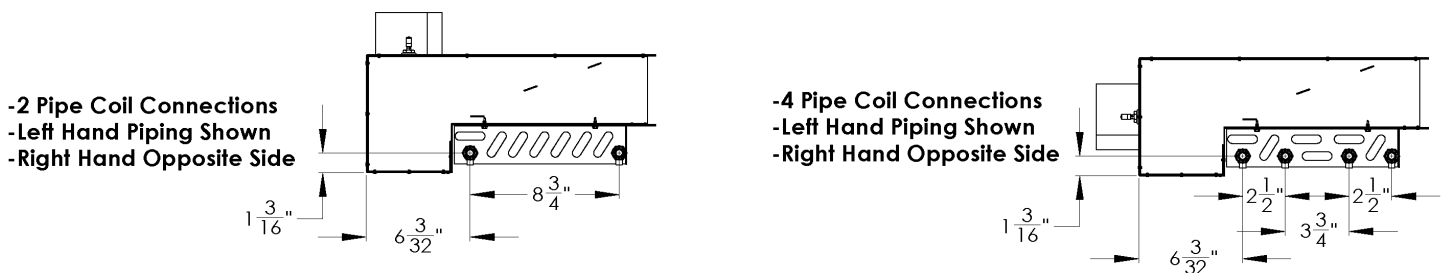
Back and Top Inlets and Fixed Bracket Mounting Locations

Beam Length	L (in)	A (in)
2'	24	23 1/4
3'	36	35 1/4
4'	48	47 1/4
5'	60	59 1/4
6'	72	71 1/4

Inlet	D (in)
3"	2 3/4
4"	3 3/4
5" Oval	2 1/2 x 6 1/4



Piping Configurations



Project: Carson Samples

Submittal Date: 6/18/2023

Location: Golden Valley, MN

Page 10